

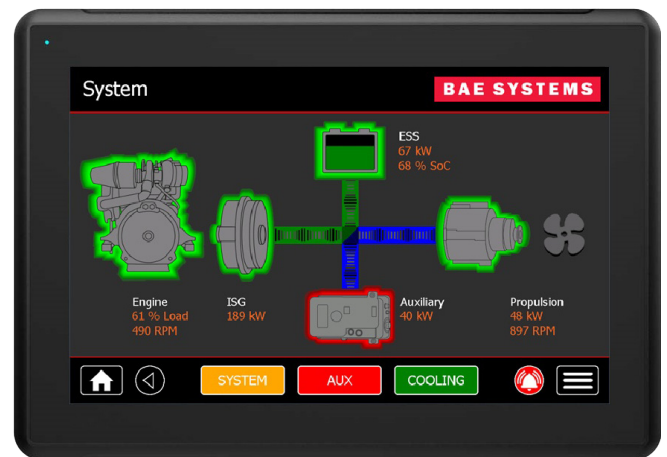
Power and Propulsions Solutions

Marine Display System

Our marine display system allows operators to view all vital data related to the propulsion of their vessel in one easy-to-manage solution.

Installed with our custom software, the technology is designed for easy navigation between data pages—operators can intuitively switch between various information sources, gather data on their propulsion system, and react accordingly to the data presented—ensuring the efficient running of a vessel.

Our system is comprised of two displays. A main 12" helm display acts as the primary source of all information with multiple pages of subsystem data, a secondary 7" display presents a single page of critical data suitable for a wing station.

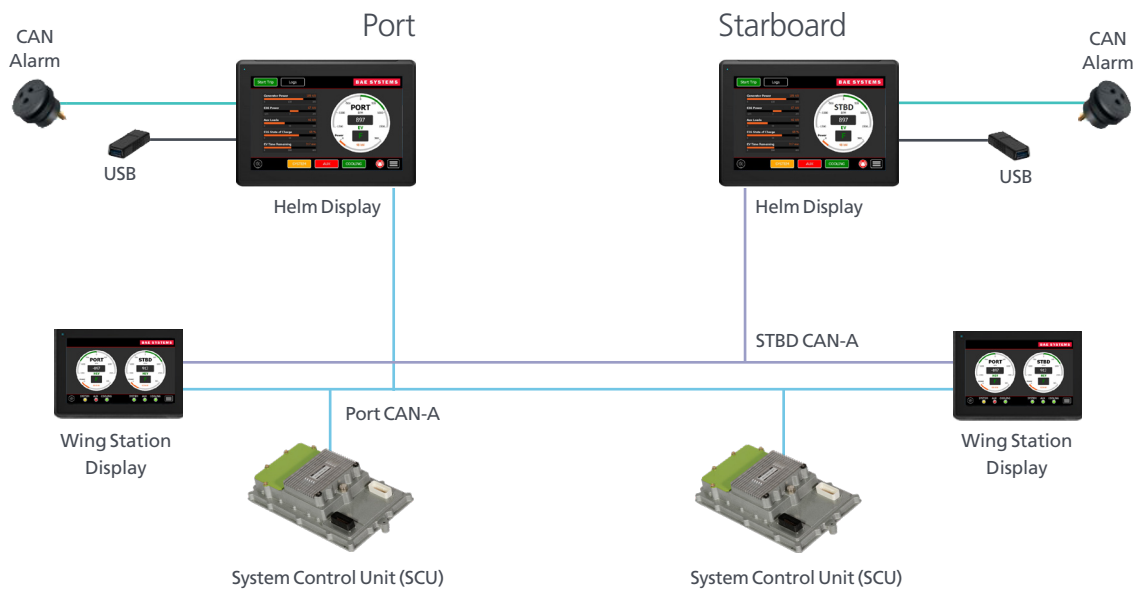


What it does:

- An extremely rugged design and build, housed in robust aluminum
- Internally isolated
- Runs on a powerful Cortex-A9 processor
- UL, CE, FCC, and KKC certified
- High brightness TFT-LCD display
- Meets extended class of marine certifications not typically carried by human-machine interfaces
- Runs on BAE Systems' power and propulsion solutions software

What is the benefit:

- Will not let operators down in testing environments – resistant to direct rain, snow, dirt, grime, and dust
- Conforms to standard marine surge and burst immunity
- Provides fast transition between various data screens and exceptional performance on demanding applications
- A trusted solution backed by independent certification
- Critical data will be sharp and clearly visible at all times, even in sunlight Independent power sources for fault isolation
- A solution suitable for all on-board locations
- Highly intuitive user interface, customizable to meet individual operator requirements



	7" Display	12" Display
Power consumption	17W	23W
Input voltage	24 V DC	
General certification	CE, FCC, KCC, UL 61010-2-201 . UL746C	
Hazardous certification	UL Class I Div 2, ATEX/IECEx Zone 2, 22	
Marine certification	DNV GL, KR, LR, ABS, CCS, BV, NK	
Mechanical dimension	204 x 143 x 62mm	340 x 242 x 69mm
Display type	TFT-LCD with LED backlight	
Resolution	800 x 400 pixels	1280 x 800 pixels
Backlight	LED	
Backlight lifetime	50,000 hours	100,000 hours
Operating temperature	-30°C to + 70°C	
Storage temperature	-40°C to + 80°C	
Shock	40g, half-sine, 11ms according to IEC60068-2-27	
Vibration	4g according to IEC60068-2-6	

North America
 BAE Systems
 1098 Clark Street
 Endicott, NY 13760
 USA

Rest of World
 BAE Systems
 Marconi Way
 Rochester, Kent ME1 2XX
 UK

www.gettozero.com

This document gives only a general description of products and services and except where expressly provided otherwise shall not form part of any contract. From time to time, changes may be made in the products or conditions of supply.

Published work © 2021 BAE SYSTEMS. All rights reserved.

BAE SYSTEMS is a registered trade mark of BAE Systems plc.

CS-21-F08